



Comprehensive and proven set of applications and tools for custom network management solutions

WebNMS Framework

WebNMS Framework is a comprehensive network management platform that offers purpose-built applications and tools designed to simplify the management of networking devices and resources.

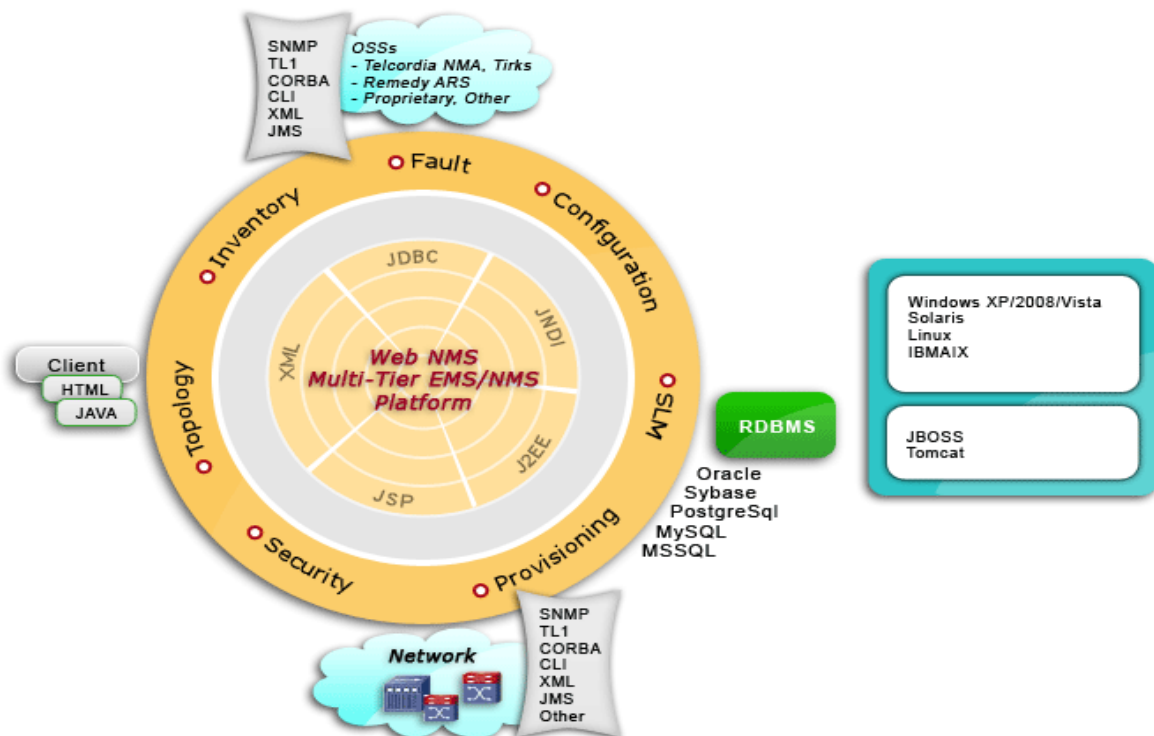
WebNMS Framework enables network monitoring, configuration and troubleshooting of each device or resource and manage an entire network from a single platform. WebNMS Framework has a true N+ architecture that allows multiple users to access its services simultaneously.

It delivers network level management while providing access to various element managers.

Its functionalities include:

- Unified management: It provides a common graphical interface and network management infrastructure for performing management functions, integrating applications, and unifying element management across multiple devices.
- Network-wide visibility: It enables extensive view and in-depth reporting of network activity across the network with functions such as discovery, physical and logical topology maps, centralized event management, graphs, and statistical information. This is also supported in distributed networks.
- Element management: It provides direct access to each device through its native element manager and allows all networking devices to be configured from a centralized location. It also supports policy-based management across multiple device types.
- Scalable architecture: It provides single-user and multi-user versions and an extensible architecture with applications that allow the network management environment to be tailored to the user's network and budget needs. It supports management of very large networks with capability to distribute network facing functionalities across servers.

Comprehensive Network Management Functionalities





WebNMS Framework platform provides a solid foundation that is based upon:

Widely Deployed Platform

Over 120 network equipment vendors including large incumbents like Lucent, Nortel, Motorola, Siemens, Ericsson and startups like Movaz, Turin and others have successfully implemented and deployed management applications based on WebNMS Framework. WebNMS Framework has also been selected as a management platform for building NMS solutions by Service Providers such as Chunghwa Telecom, PT Telecom, Nexagent, Equant, and Uninet. Added to the proven track of Web NMS, it brings a cost-sensitive and feature-rich platform for developing a prudent network management solution.

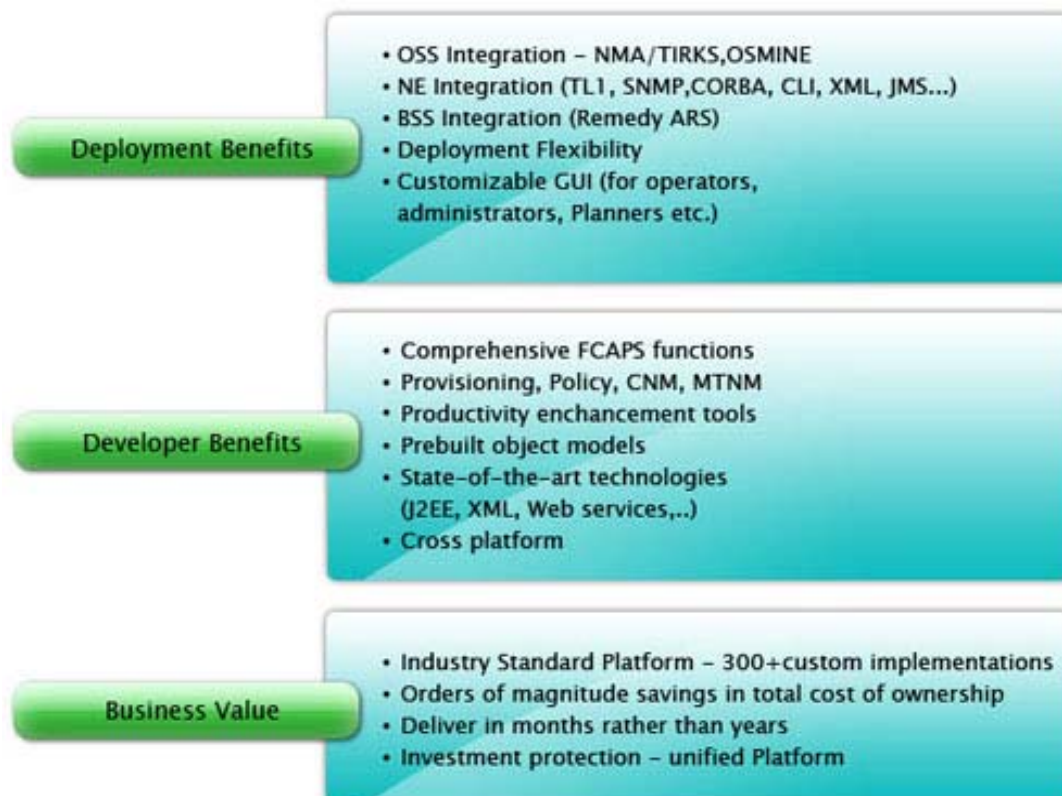
Productivity Enhancement Platform

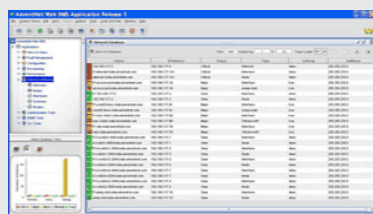
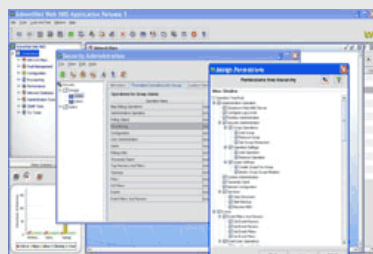
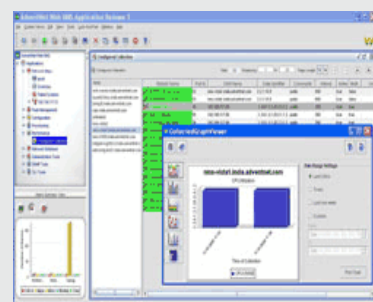
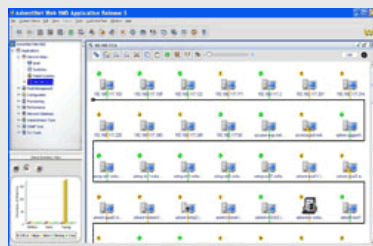
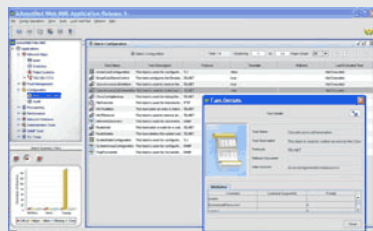
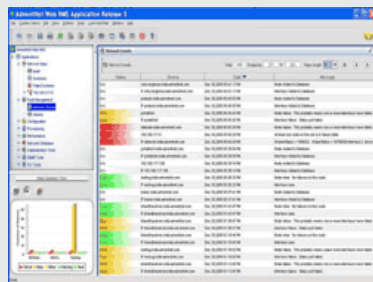
WebNMS Framework comes bundled with Studio Tools - with plugin for Eclipse IDE that enables easy design, development and maintenance of network management applications. For rapid development WebNMS Framework provides a comprehensive code-generation wizard that complements resource modeling and service customization tools by enabling complex instrumented applications. Additionally, WebNMS Framework offers Project Tools which are useful in development, testing, deployment, maintenance, support and re-licensing of WebNMS Framework based applications.

Customization Capabilities

WebNMS Framework facilitates advanced customization of management services through discovery filters, alarm and event filters, rules, and correlation logic with minimal coding. Purpose-built WebNMS Framework platform readily enables customization to various technology domains that include ATM, SONET/SDH, Optical, VoIP, VPN, Cable, Wireless, Storage, and others.

WebNMS Framework Benefits





WebNMS Framework includes the following applications:

Fault Management

- Event/trap processing – filtering, suppression, propagation ; with intelligent correlation
- Alarm drill down categorized by severity, managed resource type, time of day etc.
- Problem resolution work flow management – categorize alarms as open, closed and acknowledged

Configuration Management

- N-tier architecture with server support for storing, scheduling, auditing etc.
- Supports parameterized XML tasks for easy management of configuration functions
- Supports rollback capability for recovery from failures

Discovery

- Auto-discovery and topology update
- Rich information model to capture attributes of heterogeneous networks with deep discovery
- Topology summary and hierarchical representation of managed resources
- Intelligent grouping for simplified configuration management

Performance Management

- Analyze, filter and aggregate network performance data
- Distributed multi-tier architecture in the Polling Engine to provide more scalability and reliability.
- Customize aggregation policies
- Multi-level thresholding and hysteresis
- Intuitive and graphical performance management reports

Security Management

- Fine grained and extensible authorization including support for users, groups, roles, operations and object views
- Secure authentication and access control including SSL and secure RMI server access control J2EE security model support

Inventory Management

- Complete infobase of components and devices across the network
- Can also be integrated with any third party inventory management system



WebNMS Framework 5

Powering Element and Network Management Solutions



Product Brief

System Features	
Application Servers	JBoss
Web Servers	Tomcat
Choice of Clients	Java application client Applet client Web (HTML) client and Java WebStart client
Web Browsers	Internet Explorer Mozilla FireFox
Java Runtime Environments (JRE)	JRE 1.6 (All Editions)
JDK	JDK 1.5 (All Editions)
XML Parsers	Any JXAP 1.4 compliant parser
Language Support	JDK 1.6 Internationalization API

WebNMS Framework Professional Edition	
21004.0D	Named Developer License Fee per seat
21004.0ROBP	Professional Edition runtime : BE Primary Server (Mandatory)
21004.0ROBS	Professional Edition runtime : BE Secondary Server (Optional)
21004.0PMS	Maintenance and Support Tools (Optional)
21004.0PS	WebNMS Framework Test Suite (Optional)

Hardware Requirements	
CPU	2.0
Memory	1 GB RAM or Higher
Disc Space	400 MB + 200 MB Swap



Zoho Corporation

4141 Hacienda Drive,
Pleasanton, CA 94588. USA

Phone: 1-925-924-9500

Fax: 1-925-924-9600

Web Site : <http://www.zohocorp.com>

For queries on products : sales@webnms.com

For 24/7 support : nms-support@webnms.com

© Copyright 1996-2009 Zoho Corporation Pvt. Ltd. All Rights Reserved

About Zoho Corporation

Zoho Corporation provides affordable software for database migration, management and provisioning of complex networks, systems, and IT applications. With a broad product portfolio and an active customer base ranging from enterprises, equipment vendors, and service providers, Zoho Corporation has emerged as a very affordable and high-quality alternative to expensive software that is common in this industry.

Zoho Corporation has offices in CA, Austin, New Jersey, Chennai, Singapore, Tokyo and Beijing. It has a well-trained partner base around the globe and thousands of customers world-wide. For more information, call 925-924-9500 or visit our Web site at: www.webnms.com.